




CASTLE CARY WHAT IS WHERE

TRAVEL

- 1** Castle Cary Railway Station
- B** Bus Stops
-  On road Cycle Route

PLACES OF WORSHIP

- 1** All Saints C of E Church
- 2** Castle Cary Methodist Church
- 3** St Andrews Cof E Church

MEDICAL CENTRES

- 1** Millbrook Surgery

COMMUNITY FACILITIES

- 1** Post Office
- 2** Post Box
- 3** Library
- 4** Caryford Community Hall
- 5** Youth Centre
- 6** Caryford Fitness and Leisure Centre
- 7** Football Club
- 8** Bowls Club
- 9** Cricket Club
- 10** Play Park
- 11** Fairfield Play Area

SHOPPING

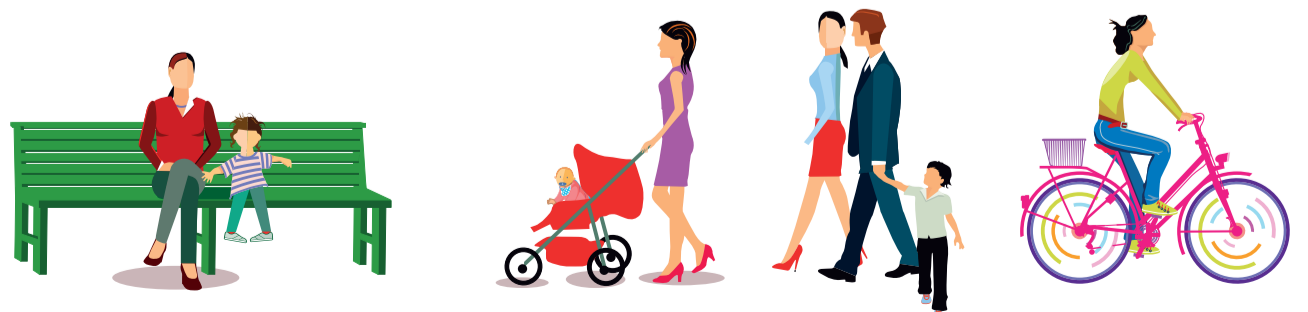
- 1** Co-op Store
- 2** Boots
-  Town Centre - Range of shops available

EDUCATION

- 1** Castle Cary Community Primary School
- 2** Ansford Academy
- 3** Toybox Pre-School

BUSINESS/INDUSTRIAL

- 1** Torbay Road Trading Estate





WELCOME TO YOUR NEW NEIGHBOURHOOD

We want to help make your journeys as easy as possible. So this leaflet will arm you with useful information on reaching your destinations using a range of methods - including some you may not have tried before. You may discover that cycling, walking or catching a bus could save you time and money, as well as keeping you fit - they're better for the environment too. There are lots of interesting places to visit within walking distance. So take a look at the key points covered in this leaflet and visit the listed websites for more comprehensive details.

We hope you'll be very happy in your new home and enjoy exploring your surroundings. This is a great opportunity to try something new. Safe journeys!



PLAN YOUR TRIPS

Travel Somerset: This Somerset County Council service aims to provide helpful travel tips and information on bus travel, walking and cycling across the county. It also has an interactive map showing current and future roadworks as well as live updates on accidents and delays on roads within Somerset. For more information go to www.travelsomerset.co.uk

Journey Planners: A journey planning tool and information can be found at: www.travelinesw.com



MULBERRY
MEADOWS
CASTLE CARY
TRAVEL TIPS



CYCLING SAVES MONEY AND KEEPS YOU FIT

Cycling keeps you fit and burns calories, as well as being a cheaper alternative to running a car or using public transport. Cycling will also reduce your carbon footprint and help the environment. Sustrans is the UK's leading sustainable transport charity, with loads of useful information and tips on cycling available on their website www.sustrans.org.uk

Cycle routes

Regional Cycle Network (RCN) Route 30 passes through Castle Cary and can be joined from Station Road some 650m to the south of Mulberry Meadows at the junction with Torbay Road.

RCN Route 30 is a circular route providing access to Yeovil, South Petherton, Crewkerne and Ilminster. RCN Route 30 is a signed on road route through the town and on local roads with off road sections further afield.

Cycle Tips

Follow the Highway Code · Wearing a helmet is recommended · Carry a lock · A bell, lights and a pump are essential · Watch your speed · Ride in a position where you can see and be seen · Give way to pedestrians · Undertake regular bike maintenance checks · Carrying a spare inner tube is recommended · Aim for quiet streets and cycle paths.



WALKING IS ALWAYS BEST

Walking is a great way to discover more about your community, improve your fitness and save money on travelling. There are a number of benefits of regularly walking for short and local journeys:

- Walking doesn't take long and it's free – within 15 minutes you can reach the Market Place and all its facilities;
- It's healthy – regular walking can reduce the risk of many health problems such as coronary heart disease, strokes, high blood pressure, anxiety and stress;
- It improves your quality of life – walking can help with weight control, stamina and energy levels; and
- It's convenient – you can walk to most places at any time. You can also start slowly and gently build up space and distance.



MAKING THE RIGHT CONNECTIONS BY TRAIN

Castle Cary railway station is half a mile to the north of Mulberry Meadows, a 10 minute walk, 4 minute cycle or 2 minutes by car. Car parking is available for over 150 cars as well as 5 disabled spaces. Cycle parking is also available at the station.

The station provides services to destinations locally including Bruton, Taunton and Yeovil as well as further afield including Exeter, Weymouth, Bristol, Reading and London Paddington.

Train Information:

Information to assist with planning journeys, ticket prices, rail cards and purchasing tickets is available from train operator websites or national train ticket websites including:

- Great Western Railway – www.gwr.com
- South Western Railway – www.southwesternrailway.com
- National Rail – www.nationalrail.co.uk
- The Trainline – www.thetrainline.com

South Western Railway

Great Western Railway



GETTING AROUND BY BUS

Local Bus Services - South West Coaches

The closest unsigned bus stops are on Station Road some 130m to the north of Mulberry Meadows.

The 667 service from Wincanton to Street via Castle Cary and Bruton operates every two hours during the day Monday-Saturday stopping at the northbound stop only. A southbound service operating at a similar frequency to the northbound service is provided 1.1km south of the site on Fore Street in Castle Cary town centre. There are unfortunately no evening or Sunday services currently.

The 1/1B service from Yeovil to Shepton Mallet via Wincanton, Castle Cary and Bruton operates from Station Road twice per day Monday - Friday at 08:06 and at 18:29. Four services are provided on Saturdays at 08:18, 11:32, 14:53 and at 18:38. Unfortunately there is no Sunday service.

More frequent 1/1B services operate from Fore Street on an approximately hourly basis from 06:28 - 13:47 with two additional services at 17:17 and 18:27. Four services are provided on Saturdays and no services operate on Sundays from Fore Street.

Service 646/647 from Gillingham to Stroud College Street via Wincanton and Castle Cary operates on college days Monday - Friday at 08:09.

The South West Coaches Smartcard

The South West Coaches Smartcard gives you a 20% discount on all fares on all services. To obtain a Smartcard either call the South West Coaches office or fill in the form via the url: <https://form.jotform.com/202610346822043>

- The maximum amount that can be added to the card at any one time is £50;
- Smartcards are not transferable and can only be used by the person the card is issued to.

Additionally you can use contactless payments methods on all buses.

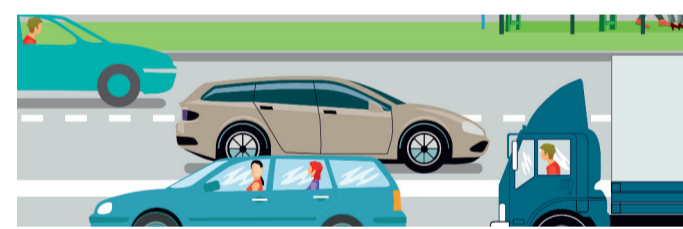
Contact information

Telephone: 01935 475872

Email: info@southwestcoaches.co.uk

Facebook: www.facebook.com/southwestcoachesltd

Twitter: @SouthWestCoach1



CAR SHARING MAKES SO MUCH SENSE

Car sharing is a great way of travelling by car, and a great way of reducing the amount of cars on the road at the same time. Car sharing involves two or more people sharing a vehicle rather than driving separately.

Government restrictions on car sharing have now been lifted. The government however continue to advise on wearing face masks when car sharing with people you do not usually meet and keeping windows open where possible.

Other benefits of car sharing include: reduced travel costs as petrol costs can be shared, more sociable travel and easier parking at many offices which now offer dedicated 'car share' parking spaces.

Finding a car share partner

Register your journey details on the national Liftshare website to see if anyone else is travelling in the same direction at similar times.

www.liftshare.com



OR IF YOU NEED A TAXI

Craig's Taxi
Tel: 07563 612473

Anzford Cars
Tel: 07831 249441